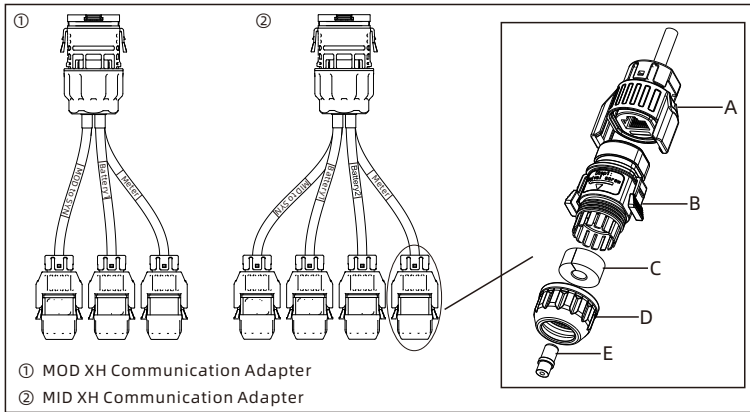


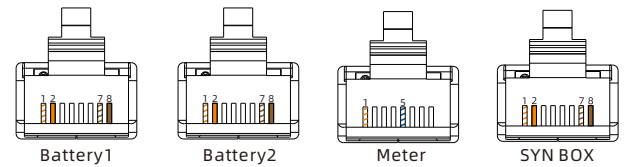
1. Overview



Object	Description
A	RJ45 Ethernet port terminal
B	Connect housing
C	Waterproof rubber ring
D	Locking nut
E	Waterproof plug

2. Installing the Connector

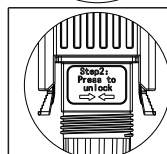
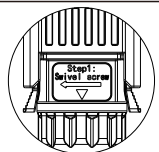
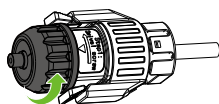
- ① Please follow the international T568B Ethernet cable wiring standard for crimping the network cable.
- ② Port Battery 2 is for MID-XH inverter only.



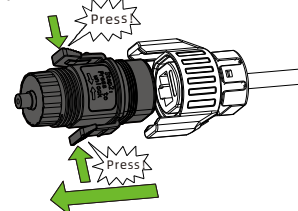
PIN	Color	Meter		Battery1		Battery2 [®]		MOD XH to SYN BOX		MID XH to SYN BOX	
		RJ45	INV COM	RJ45	INV COM	RJ45	INV COM	RJ45	INV COM	RJ45	INV COM
1	Orange&White	RS485B	6	Wake up-	10	Wake up-	30	BOX EN-	22	BOX EN-	22
2	Orange	/	/	Wake up+	9	Wake up+	29	BOX EN+	21	BOX EN+	21
3	Green&White	/	/	/	/	/	/	/	/	/	/
4	Blue	/	/	/	/	/	/	/	/	/	/
5	Blue&White	RS485A	5	/	/	/	/	/	/	/	/
6	Green	/	/	/	/	/	/	/	/	/	/
7	Brown&White	/	/	RS485B	8	RS485B	28	RS485B	18	RS485B	24
8	Brown	/	/	RS485A	7	RS485A	27	RS485A	17	RS485A	23

Label	Installation Details
Battery 1	Connect this port to the INV port of the Battery1 (located on power module) using a network cable. Note: When connecting only one cluster of batteries, connect it to the battery1 port.
Battery2	When MID-XH is connected to two clusters of batteries, use a network cable to connect this port to the INV port of Battery2 (located on power module).
Meter	Meter communication ports, where the blue & white (5th) is 485A and the orange & white (1th) is 485B. Connect this port to the meter using an network cable.
SYN BOX	SYN BOX communication ports. Connect this port to COM port of SYN using a network cable.

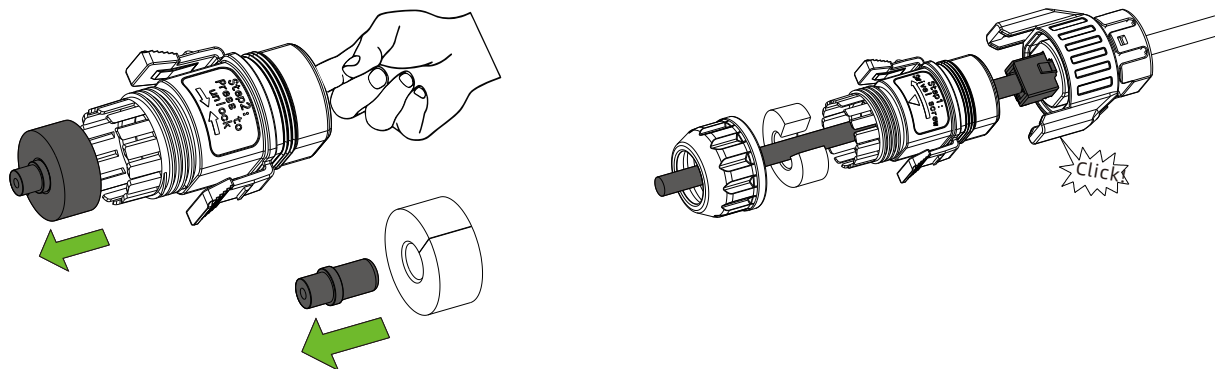
- ① **Step1:** Rotate the locking nut counterclockwise.



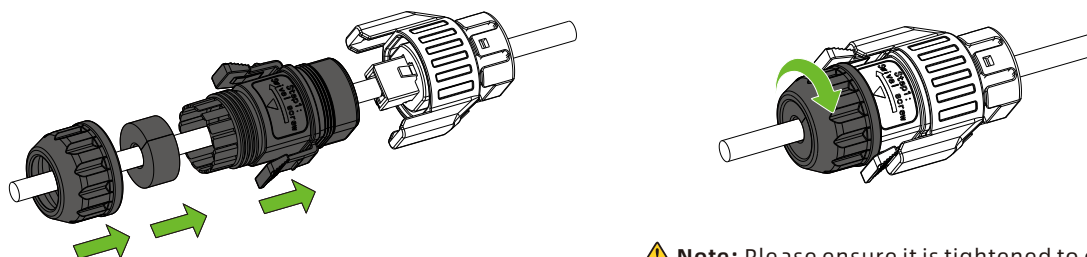
- ② **Step2:** Press the clip on both sides of the housing and pull downward to remove.



③ **Step3:** Push out the waterproof rubber ring, the Ethernet cable passes through the locking nut, waterproof rubber ring, and connector housing in sequence.



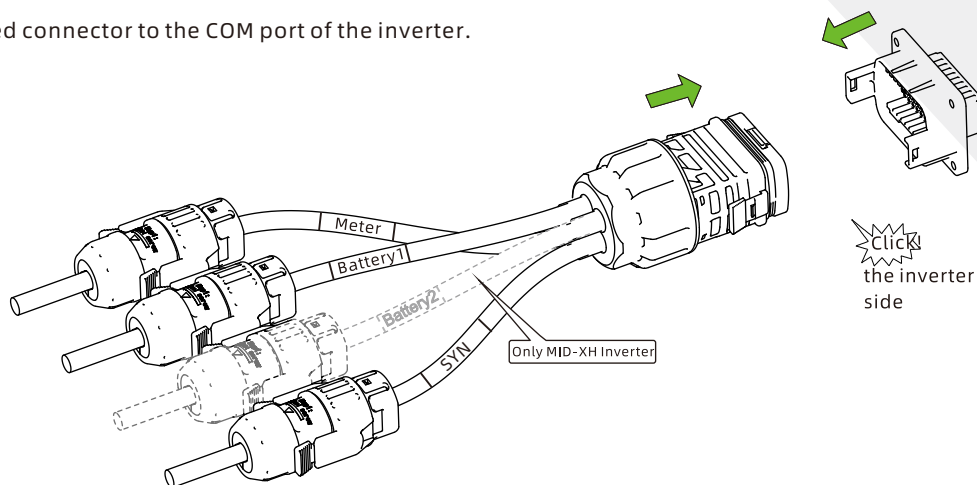
④ **Step4:** Complete the connection in sequence shown in the diagram.



⚠ **Note:** Please ensure it is tightened to ensure waterproofing.

⑤ **Step5:**

1. Connect the assembled connector to the COM port of the inverter.



3. Service and Contact

Shenzhen Growatt New Energy Co., Ltd.

4-13/F, Building A, Sino-German (Europe) Industrial Park,
Hangcheng Blvd, Bao'an District, Shenzhen, China

E service@growatt.com

W en.growatt.com

For local customer support, please visit <https://en.growatt.com/support/contact>



Download
Manual



🔍 Growatt New Energy

GR-UM-524-A-00 (PN:044.0156900)